

RMD-X系列产品命名规则
RMD-X SERIES NAMING CONVENTIONS

产品应用广泛
Products widely used

广泛应用于足式机器人 / 机械臂 / SCARA 机器人等
Widely Used In Humanoid Robot/Legged Robots/Robot Arm/SCARA/AGV/AMR etc.



机械臂
Robotic Arm



人形机器人
Humanoid Robot



外骨骼机器人
Exoskeleton Robot



四足机器人
Quadruped Robot



AGV智能车
AGV Smart Car



ARU机器人
ARU Robot

RMD-X4-P6-3-C-N

① ② ③ ④ ⑤ ⑥

- ① 品牌名称: RMD (Reducer Motor Drive)
Brand Name R-Reducer M-Motor D-Drive
- ② X代表系列名: 一体化行星减速模组, 4代表基座号 例如: X4 X6 X8 X10等
X Stands For The Series Name: Integrated Planetary Actuator, 4 represent motor model number e.g:X4 X6 X8 X10 etc
- ③ 行星减速比 例如: P6 P7 P8等
Planetary gear ratio e.g:P6 P7 P8 etc
- ④ 峰值扭矩 3N.m
Peak torque 3N.m
- ⑤ 通信方式 C: CAN BUS R: RS485
Communication C: CAN BUS R: RS485
- ⑥ N: 无抱闸
N: Without Brake

例如 For example

型号 RMD-X6-P6-7-C-N

说明 RMD: 品牌名
X6: 电机型号名
P6: 行星减速比6:1
7: 峰值扭矩
C: CAN bus 通信
N: 无抱闸

Model RMD-X6-P6-7-C-N

Illustrate RMD: Brand Name
X6: Motor model name
P6: Planetary gear ratio 6:1
7: Peak torque
C: Communication C: CAN bus
N: Without Brake

系列名 Series Name

RMD-X V3

曾用名 Previous Name

RMD-X6 1:8 V3

电机简称 Motor Simplified Name

X6-8



双编码器 Dual Encoder

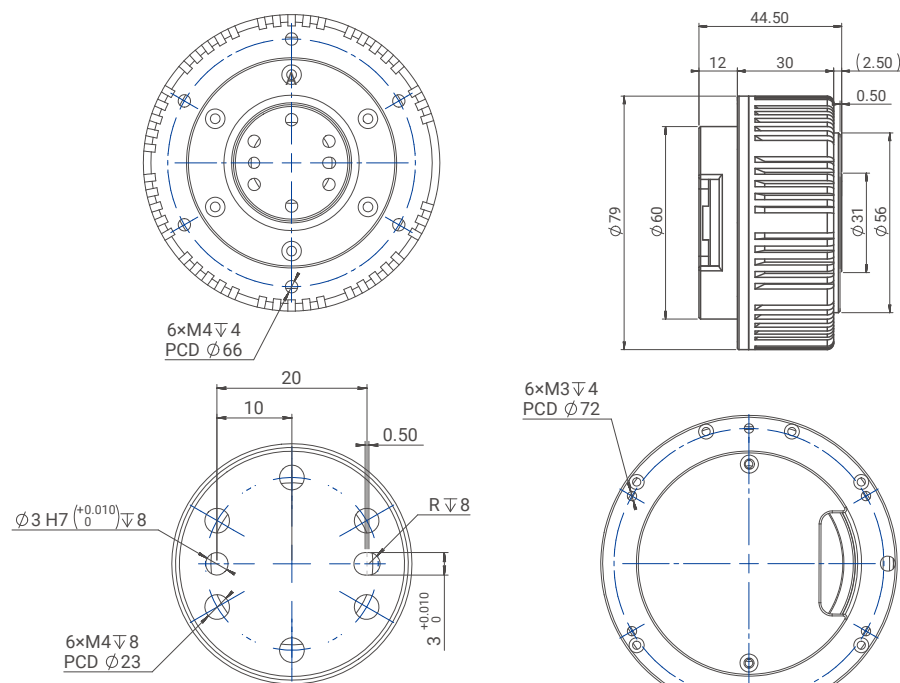
型号 Actuator Full Name	货品编码 Product Code	抱闸/非抱闸 With Brake/Without Brake
RMD-X6-P8-8-R-N	1102020080230200	N (without brake)
RMD-X6-P8-8-C-N	1102020080130200	N (without brake)

* 1. 标准品电机不支持抱闸，如需可定制抱闸。The standard motor doesn't support brake, support customization.

* 2. 标准品电机不支防水，如需可定制品IP54。The standard motor doesn't support IP54, support customization.

* 3. 标准品电机支持CAN BUS和RS485。The standard motor support CAN BUS and RS485.

尺寸安装图 Installation Drawing



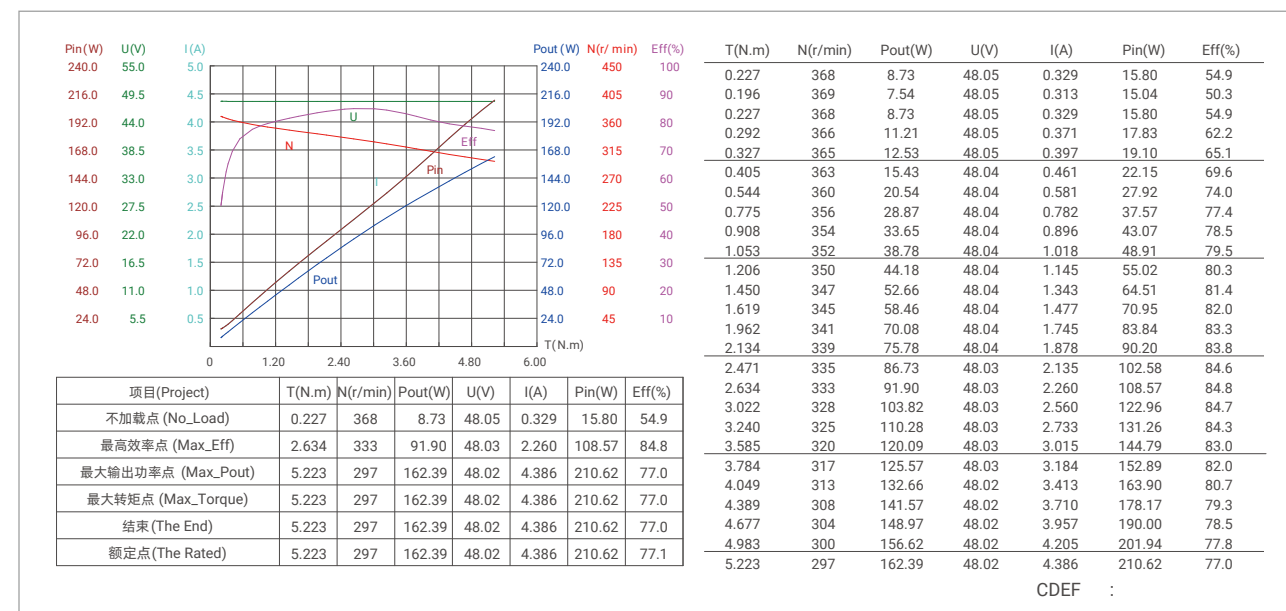
产品参数 Product Parameters

参数 Parameters	单位 Unit	X6-8
减速比 Gear ratio		8
输入电压 Input Voltage	V	48
额定转速 Rated Speed	RPM	310
额定转矩 Rated Torque	N.m	4.5
额定功率 Rated Power	W	135
额定电流 Rated Current	A	3.6
峰值扭矩 Peak Torque	N.m	8
峰值电流 Peak Current	A	7.2
效率 Efficiency	%	78
极对数 Pole Pair	—	14
反驱动力矩 Anti-Force Torque	N.m	0.1
背隙 Backlash	Arcmin	10
轴向负载 Axial Payload	N	775
径向负载 Radial Payload	N	1040
转动惯量 Inertia	Kg.cm ²	6.8
编码器类型 Encoder Type	bit	14 / 14
通信方式 Communication	—	CAN:1M/RS485:115200/500K/1M/2.5M
重量 Weight	kg	0.49

* 额定扭矩测试方法：在环境温度摄氏24度（无其他散热方式）下，在额定转速下进行测试，电机扭矩在温升60度条件下达到温度平衡、可长时间工作点为该电机额定扭矩值。

* **Rated torque test method:** When the ambient temperature is 24 degrees Celsius (no other heat dissipation methods), the test is performed at the rated speed. The motor torque reaches temperature balance under the condition of a temperature rise of 60 degrees Celsius, and the long-term working point is the rated torque value of the motor.

电机特征曲线 Motor Characteristic Curve



CDEF :

系列名 Series Name

RMD-X V3

曾用名 Previous Name

RMD-X8-Pro-H 1:6 V3

电机简称 Motor Simplified Name

X8-20



双编码器 Dual Encoder

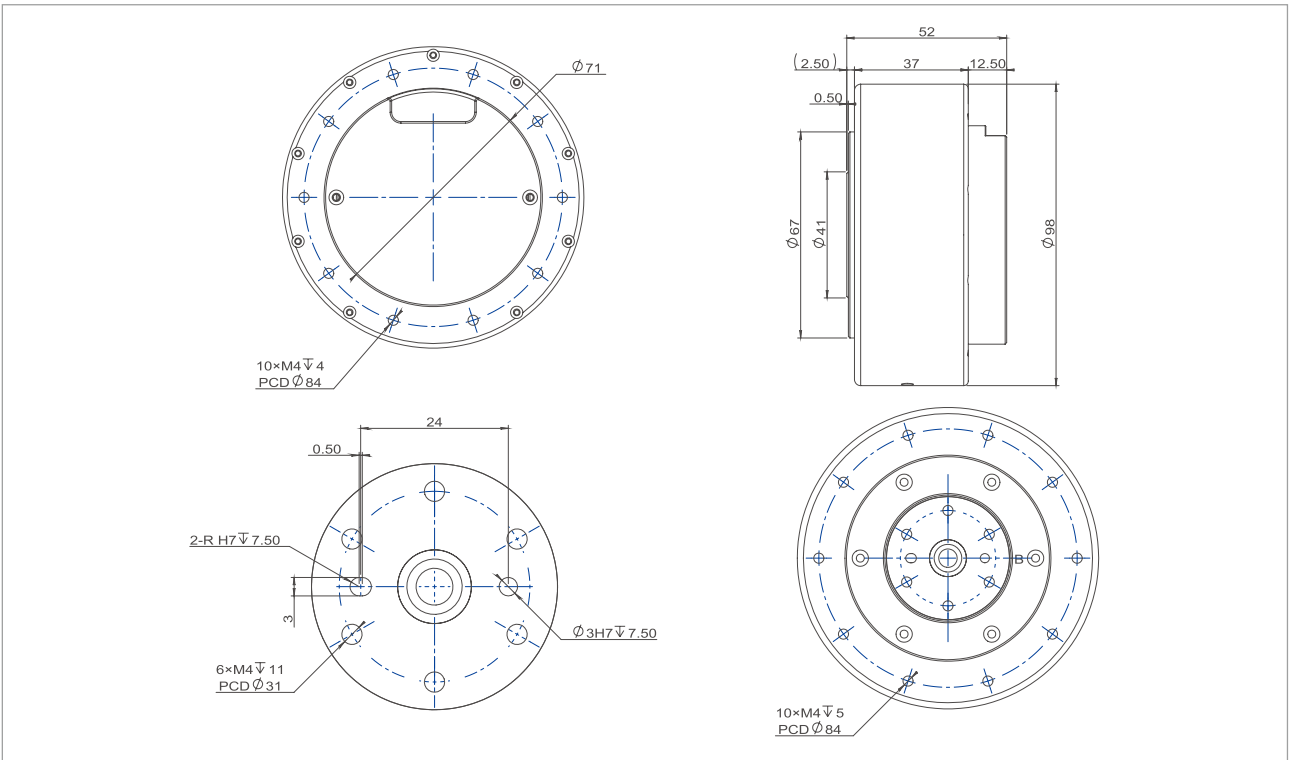
型号 Actuator Full Name	货品编码 Product Code	抱闸/非抱闸 With Brake/Without Brake
RMD-X8-P6-20-R-N	1102140060230200	N (without brake)
RMD-X8-P6-20-C-N	1102140060130200	N (without brake)

* 1. 标准品电机不支持抱闸，如需可定制抱闸。The standard motor doesn't support brake, support customization.

* 2. 标准品电机不支防水，如需可定制品IP54。The standard motor doesn't support IP54, support customization.

* 3. 标准品电机支持CAN BUS和RS485。The standard motor support CAN BUS and RS485.

尺寸安装图 Installation Drawing



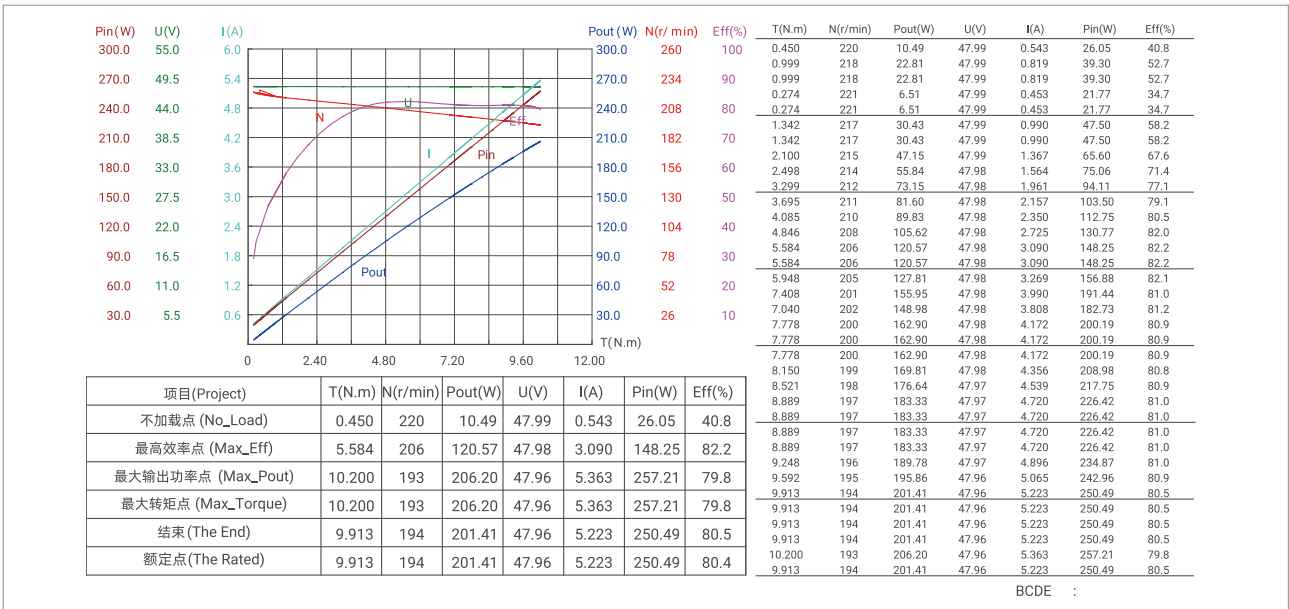
产品参数 Product Parameters

参数 Parameters	单位 Unit	X8-20
减速比 Gear ratio		6
输入电压 Input Voltage	V	48
额定转速Rated Speed	RPM	190
额定转矩Rated Torque	N.m	10
额定功率Rated Power	W	200
额定电流 Rated Current	A	5.2
峰值扭矩Peak Torque	N.m	20
峰值电流Peak Current	A	10.5
效率 Efficiency	%	80
极对数 Pole Pair	—	20
反驱力矩 Anti-Force Torque	N.m	0.4
背隙 Backlash	Arcmin	10
轴向负载 Axial Payload	N	985
径向负载 Radial Payload	N	1250
转动惯量 Inertia	Kg.cm ²	20
编码器类型 Encoder Type	bit	14 / 14
通信方式 Communication	—	CAN:1M/RS485:115200/500K/1M/2.5M
重量 Weight	kg	0.78

* 额定扭矩测试方法：在环境温度摄氏24度（无其他散热方式）下，在额定转速下进行测试，电机扭矩在温升60度条件下达到温度平衡、可长时间工作点为该电机额定扭矩值。

* Rated torque test method: When the ambient temperature is 24 degrees Celsius (no other heat dissipation methods), the test is performed at the rated speed. The motor torque reaches temperature balance under the condition of a temperature rise of 60 degrees Celsius, and the long-term working point is the rated torque value of the motor.

电机特征曲线 Motor Characteristic Curve



BCDE

:

系列名 Series Name

RMD-X V3

曾用名 Previous Name

RMD-X8 S2 1:36 V3

电机简称 Motor Simplified Name

X8-60



双编码器 Dual Encoder

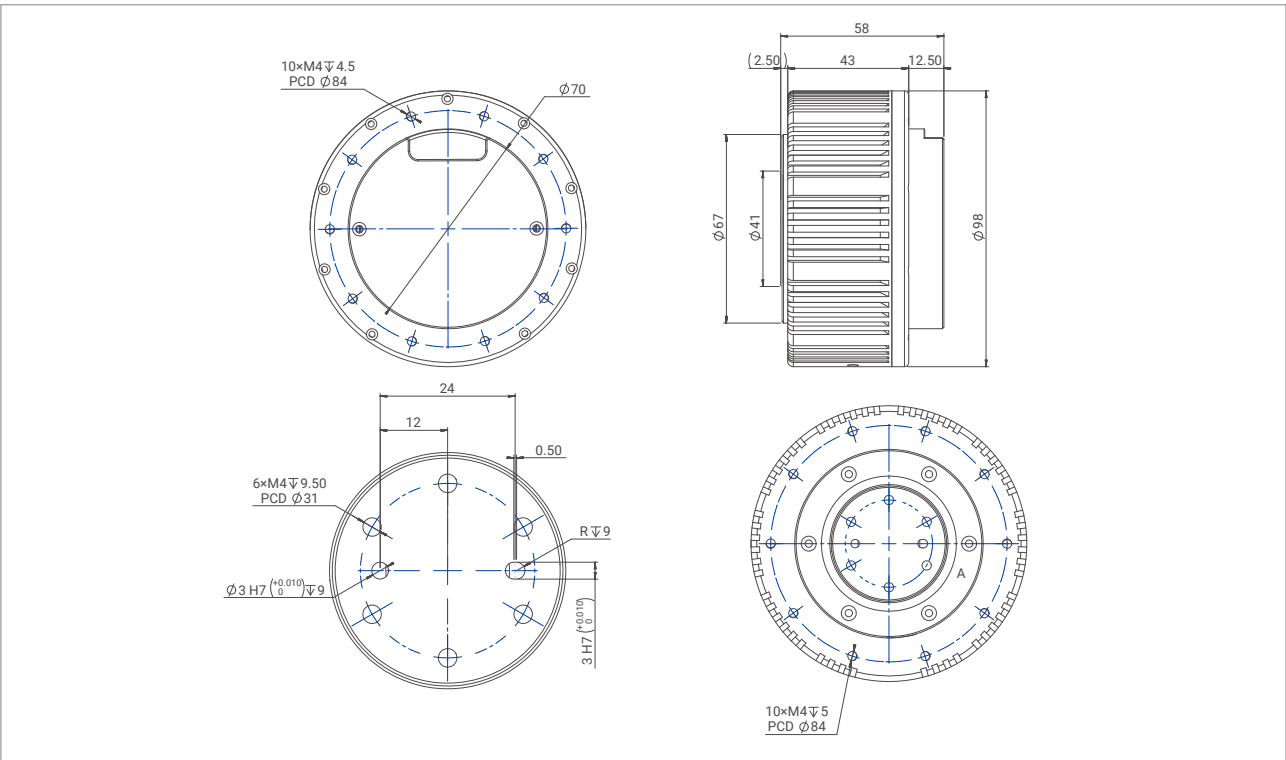
型号 Actuator Full Name	货品编码 Product Code	抱闸/非抱闸 With Brake/Without Brake
RMD-X8-P36-60-R-N	1102060360230200	N (without brake)
RMD-X8-P36-60-C-N	1102060360130200	N (without brake)

* 1. 标准品电机不支持抱闸，如需可定制抱闸。The standard motor doesn't support brake, support customization.

* 2. 标准品电机不支防水，如需可定制品IP54。The standard motor doesn't support IP54, support customization.

* 3. 标准品电机支持CAN BUS和RS485。The standard motor support CAN BUS and RS485.

尺寸安装图 Installation Drawing



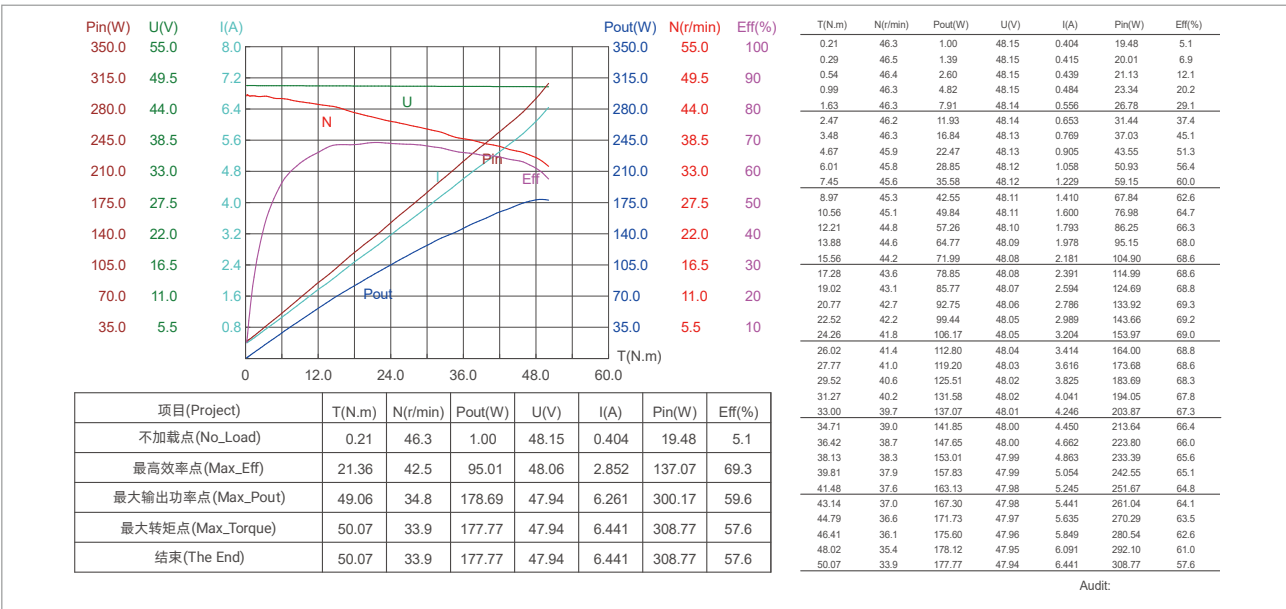
产品参数 Product Parameters

参数 Parameters	单位 Unit	X8-60
减速比 Gear ratio		36
输入电压 Input Voltage	V	48
额定转速Rated Speed	RPM	40
额定转矩Rated Torque	N.m	30
额定功率Rated Power	W	130
额定电流 Rated Current	A	4
峰值扭矩Peak Torque	N.m	60
峰值电流Peak Current	A	8
效率 Efficiency	%	69
极对数 Pole Pair	—	20
反驱力矩 Anti-Force Torque	N.m	1
背隙 Backlash	Arcmin	15
轴向负载 Axial Payload	N	985
径向负载 Radial Payload	N	1250
转动惯量 Inertia	Kg.cm ²	96
编码器类型 Encoder Type	bit	14 / 14
通信方式 Communication	—	CAN:1M/RS485:115200/500K/1M/2.5M
重量 Weight	kg	0.9

* 额定扭矩测试方法：在环境温度摄氏24度（无其他散热方式）下，在额定转速下进行测试，电机扭矩在温升60度条件下达到温度平衡、可长时间工作点为该电机额定扭矩值。

* Rated torque test method: When the ambient temperature is 24 degrees Celsius (no other heat dissipation methods), the test is performed at the rated speed. The motor torque reaches temperature balance under the condition of a temperature rise of 60 degrees Celsius, and the long-term working point is the rated torque value of the motor.

电机特征曲线 Motor Characteristic Curve



Audit:

系列名 Series Name

RMD-X V3

曾用名 Previous Name

RMD-X10 1:7 V3

电机简称 Motor Simplified Name

X10-40



双编码器 Dual Encoder

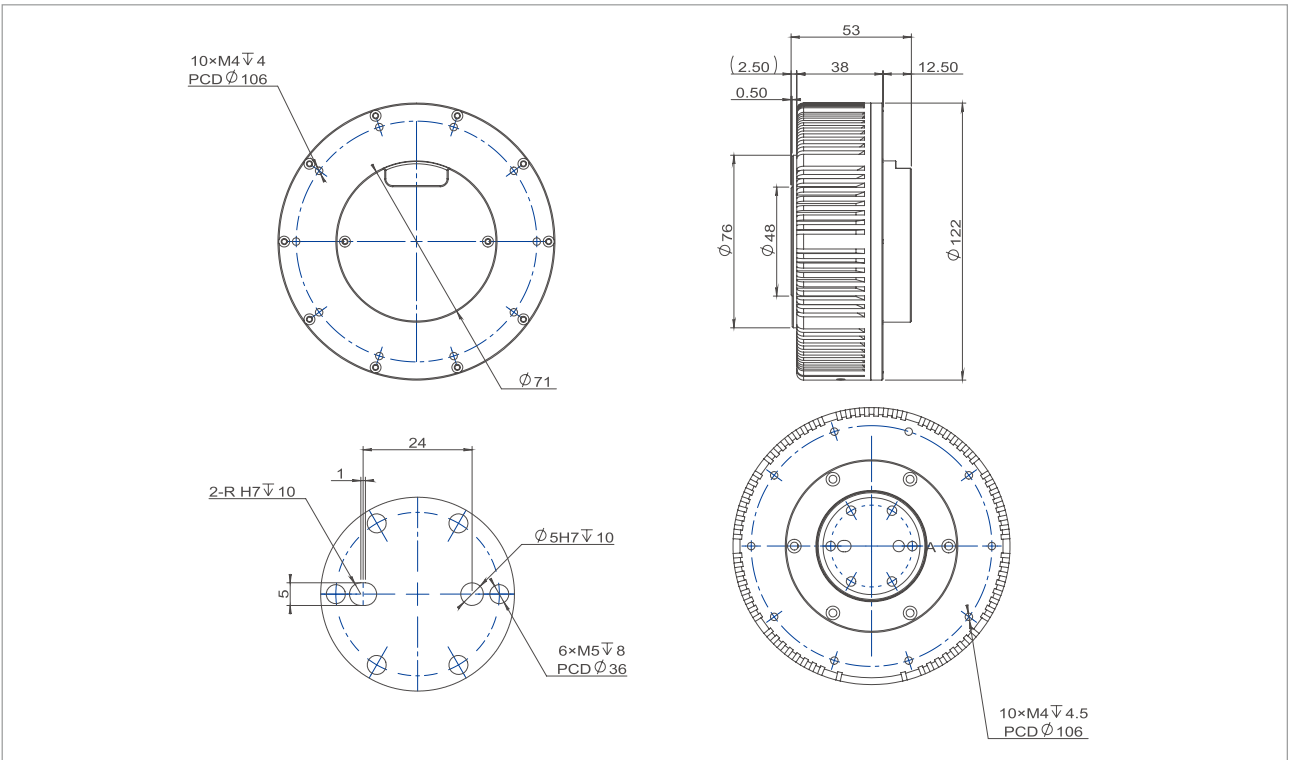
型号 Actuator Full Name	货品编码 Product Code	抱闸/非抱闸 With Brake/Without Brake
RMD-X10-P7-40-R-N	1102040070230200	N (without brake)
RMD-X10-P7-40-C-N	1102040070130200	N (without brake)

* 1. 标准品电机不支持抱闸，如需可定制抱闸。The standard motor doesn't support brake, support customization.

* 2. 标准品电机不支防水，如需可定制品IP54。The standard motor doesn't support IP54, support customization.

* 3. 标准品电机支持CAN BUS和RS485。The standard motor support CAN BUS and RS485.

尺寸安装图 Installation Drawing



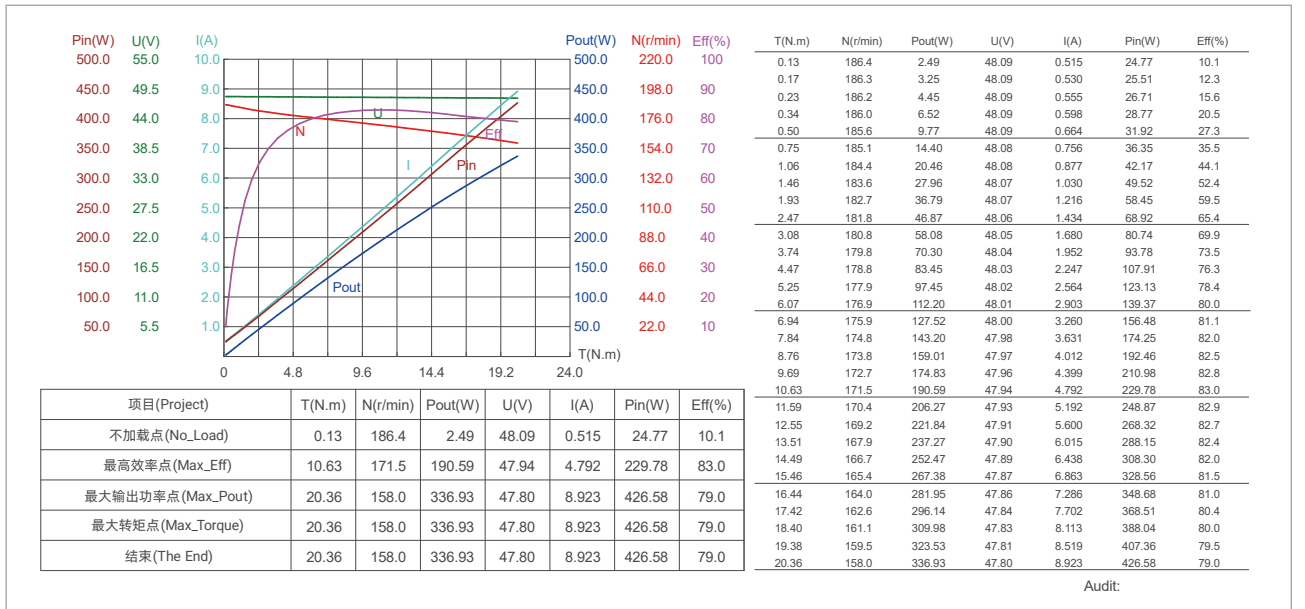
产品参数 Product Parameters

参数 Parameters	单位 Unit	X10-40
减速比 Gear ratio		7
输入电压 Input Voltage	V	48
额定转速 Rated Speed	RPM	165
额定转矩 Rated Torque	N.m	15
额定功率 Rated Power	W	265
额定电流 Rated Current	A	6.5
峰值扭矩 Peak Torque	N.m	40
峰值电流 Peak Current	A	15
效率 Efficiency	%	82
极对数 Pole Pair	—	21
反驱力矩 Anti-Force Torque	N.m	0.62
背隙 Backlash	Arcmin	10
轴向负载 Axial Payload	N	1625
径向负载 Radial Payload	N	2250
转动惯量 Inertia	Kg.cm ²	39.7
编码器类型 Encoder Type	bit	14 / 14
通信方式 Communication	—	CAN:1M/RS485:115200/500K/1M/2.5M
重量 Weight	kg	1.15

* 额定转矩测试方法：在环境温度摄氏24度（无其他散热方式）下，在额定转速下进行测试，电机扭矩在温升60度条件下达到温度平衡、可长时间工作点为该电机额定扭矩值。

* Rated torque test method: When the ambient temperature is 24 degrees Celsius (no other heat dissipation methods), the test is performed at the rated speed. The motor torque reaches temperature balance under the condition of a temperature rise of 60 degrees Celsius, and the long-term working point is the rated torque value of the motor.

电机特征曲线 Motor Characteristic Curve



Audit:

系列名 Series Name

RMD-X V3

曾用名 Previous Name

RMD-X10 S2 1:35 V3

电机简称 Motor Simplified Name

X10-100



双编码器 Dual Encoder

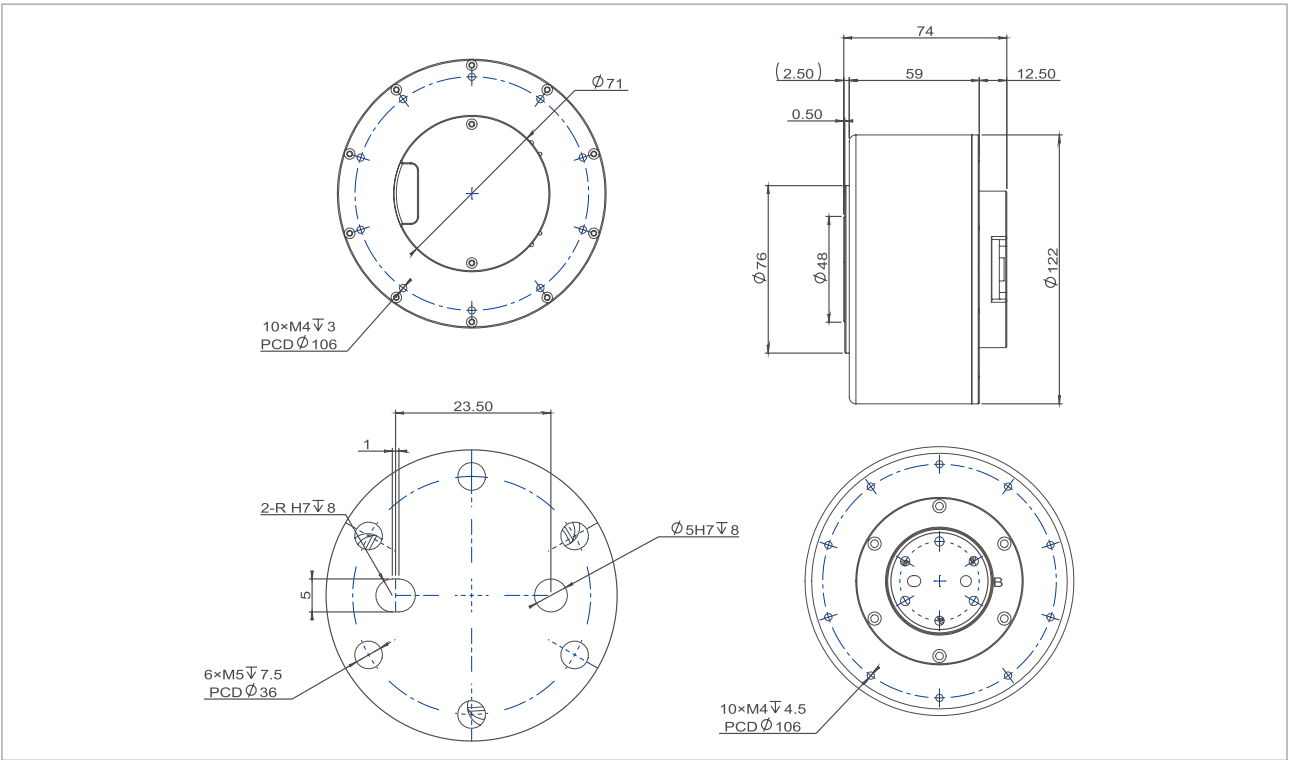
型号 Actuator Full Name	货品编码 Product Code	抱闸/非抱闸 With Brake/Without Brake
RMD-X10-P35-100-R-N	1102070350230200	N (without brake)
RMD-X10-P35-100-C-N	1102070350130200	N (without brake)

* 1. 标准品电机不支持抱闸，如需可定制抱闸。The standard motor doesn't support brake, support customization.

* 2. 标准品电机不支防水，如需可制品IP54。The standard motor doesn't support IP54, support customization.

* 3. 标准品电机支持CAN BUS和RS485。The standard motor support CAN BUS and RS485.

尺寸安装图 Installation Drawing



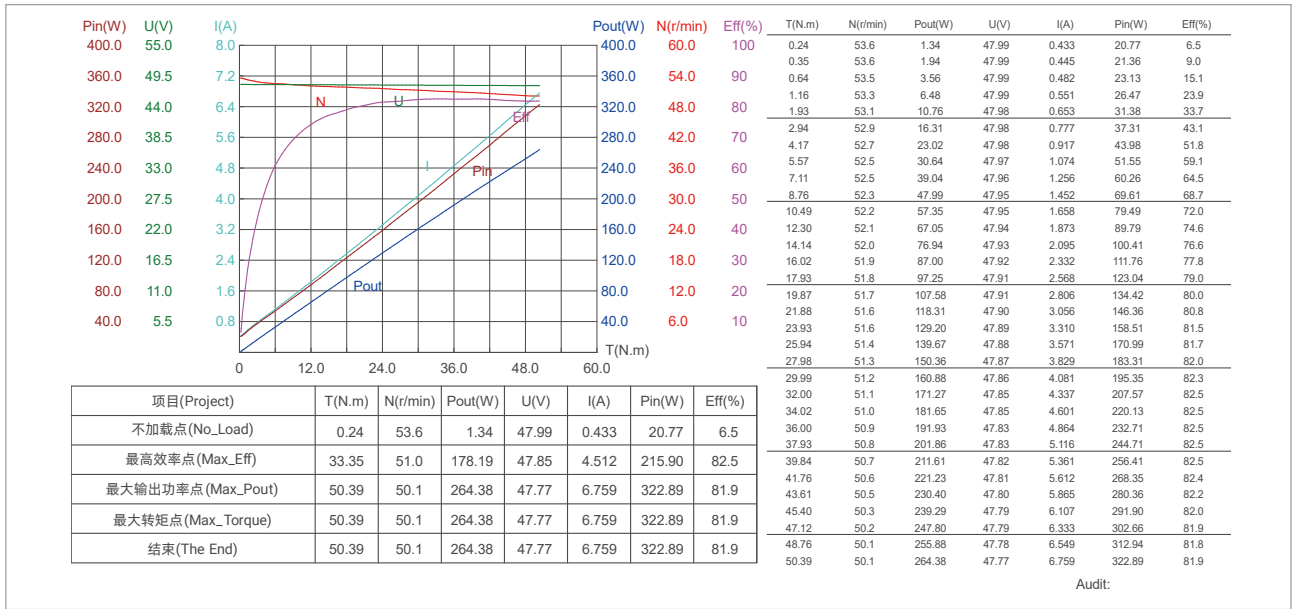
产品参数 Product Parameters

参数 Parameters	单位 Unit	X10-100
减速比 Gear ratio		35
输入电压 Input Voltage	V	48
额定转速 Rated Speed	RPM	50
额定转矩 Rated Torque	N.m	50
额定功率 Rated Power	W	265
额定电流 Rated Current	A	6.7
峰值扭矩 Peak Torque	N.m	100
峰值电流 Peak Current	A	13.5
效率 Efficiency	%	82
极对数 Pole Pair	—	21
反驱力矩 Anti-Force Torque	N.m	2.88
背隙 Backlash	Arcmin	15
轴向负载 Axial Payload	N	1625
径向负载 Radial Payload	N	2250
转动惯量 Inertia	Kg.cm ²	198.6
编码器类型 Encoder Type	bit	14 / 14
通信方式 Communication	—	CAN:1M/RS485:115200/500K/1M/2.5M
重量 Weight	kg	1.7

* 额定转矩测试方法：在环境温度摄氏24度（无其他散热方式）下，在额定转速下进行测试，电机扭矩在温升60度条件下达到温度平衡、可长时间工作点为该电机额定扭矩值。

* Rated torque test method: When the ambient temperature is 24 degrees Celsius (no other heat dissipation methods), the test is performed at the rated speed. The motor torque reaches temperature balance under the condition of a temperature rise of 60 degrees Celsius, and the long-term working point is the rated torque value of the motor.

电机特征曲线 Motor Characteristic Curve



Audit: